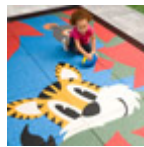
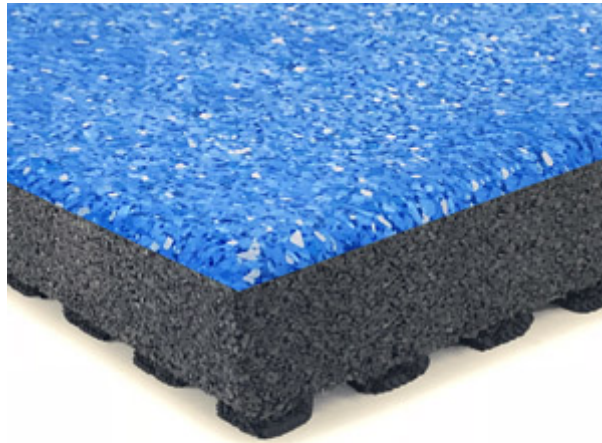


VividPlay Rubber Playground Flooring Tiles



VividPlay Rubber Playground Flooring Tiles are an excellent way to beautify any playground area while providing certified, fall protection for children while playing on slides, swings and other playground equipment.

- Our certified FallSafe(R) rubber playground flooring protects up to a 72" fall height and is both CPSC Compliant as well as ASTM F1292-04 compliant.
- Not only are custom colors attainable but custom logo designs are also available and can range from one single tile to entire playground areas.
- These heavy-duty rubber playground tiles are made from recycled rubber tires and carry a 15 year warranty.
- QuadBlock interlocking connectors are the perfect alternative to labor intensive pour-in-place and glue-down systems. These modular connectors feature precisely located openings that lock into the bottom corner of each tile to securely fasten the playground tiles together. The connectors are quick and easy to use and they allow the removal or replacement of individual tiles with minimal disruption and labor. A QuadBlock per tile is used to securely connect playground tiles together.
- Beveled Edging (8" deep, 4' long) & ADA ramps are ideal to finish off any playground flooring installation.

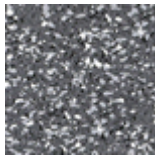
Standard Sizes (Approximate)

Size	Qty. 1-50	Qty. 51-100	Qty. 101-250	Qty. 251-2500
2.5" Thick - 2' x 2' – Black Tile	\$39.32	\$38.24	\$37.12	\$36.04
2.5" Thick - 2' x 2' – Color Tile	\$49.96	\$48.84	\$47.24	\$46.16
4' Long Beveled Ramps	\$37.36	\$36.20	\$35.12	\$34.08
QuadBlock Connectors	\$4.85	\$4.28	\$3.96	\$3.85

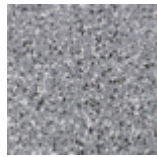
Standard Colors



Pitch Black



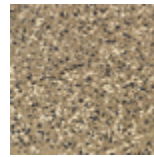
Mud Pies



Whirlwind Greys



Tan Lines



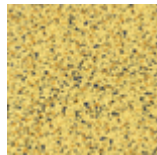
Caramel Candies



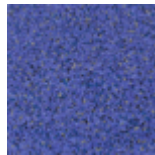
Red Cherries



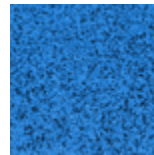
Orange Cobblers



Lemon Zests



Grape Soda



Blueberries



Candy Apples