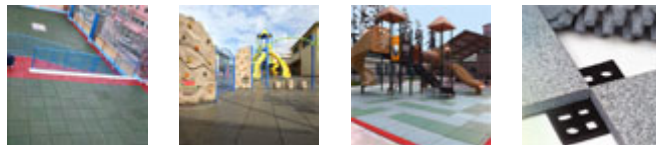


## SolidPlay Rubber Playground Flooring Tiles



Rubber Playground Flooring is an excellent way to beautify any playground area while providing certified, fall protection for children while playing on slides, swings and other playground equipment.

- Our certified FallSafe(R) rubber playground flooring has a 6' fall height and is both CPSC Compliant as well as ASTM F1292-04 compliant.
- These heavy-duty rubber playground tiles are made from recycled rubber tires and carry 15-year warranty.
- Beveled (8" deep and sloped), ADA-compliant ramps are available to finish off any playground flooring installation.
- QuadBlock interlocking connectors are the perfect alternative to labor-intensive pour-in-place and glue-down systems. QuadBlock modular connectors feature precisely located openings that lock into the bottom corner of each tile to securely fasten these playground tiles together. The connectors are quick and easy to use and they allow the removal or replacement of individual tiles with minimal disruption and labor, especially on rooftops, where water drainage is necessary. Also, these tiles are specifically engineered for outdoor use. A QuadBlock per tile is used to securely connect playground tiles together.

Item No: GRPFT

**Standard Sizes** (Approximate)

<b>Size</b>	<b>Qty. 1-100</b>	<b>Qty. 101-250</b>	<b>Qty. 251-500</b>	<b>Qty. 501-2500</b>
2.5" Thick - 2' x 2' Charcoal Tile	\$30.96	\$29.84	\$28.72	\$27.68
2.5" Thick - 2' x 2' Color Tile	\$36.92	\$35.88	\$34.72	\$33.68
4' Long Beveled Ramps	\$37.36	\$36.20	\$35.12	\$34.08
QuadBlock Connectors	\$4.85	\$4.28	\$3.96	\$3.85

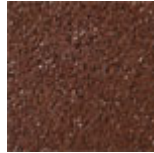
**Standard Colors**



[Solid Charcoal](#)



[Solid Dark Grey](#)



[Solid Dark Red](#)



[Solid Dark Green](#)